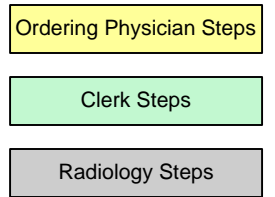


CT Order Procedure – Outpatient Clinics



Will Contrast Be Used?

- Complete all contrast fields.
- Lab values must be within 90 days of date that CT will be performed on.

Does the patient take metformin?

- Metformin will be discontinued after contrast is administered.
- Patient must be scheduled for follow-up lab for 48 hours after exam. (Information to be documented on order form).

Does the patient have a history of contrast allergy?

Premedication must be prescribed by the ordering physician (see premedication policy).

Physician completes the CT order form and gives it to the clerk.

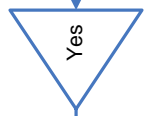
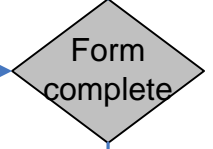
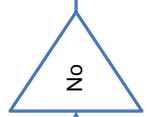
Clerk schedules exam in Invision and faxes order form to CT (fax # - 58098)

Hard Copy of Form - Send to Radiology CT

CT Technologist receives order from the fax.

Fax copy of order form goes to radiologistsit

Ordering physician contacted for clarification



Exam Performed

Patent Arrives for Exam

Exam is protocolled and information given to technologist

