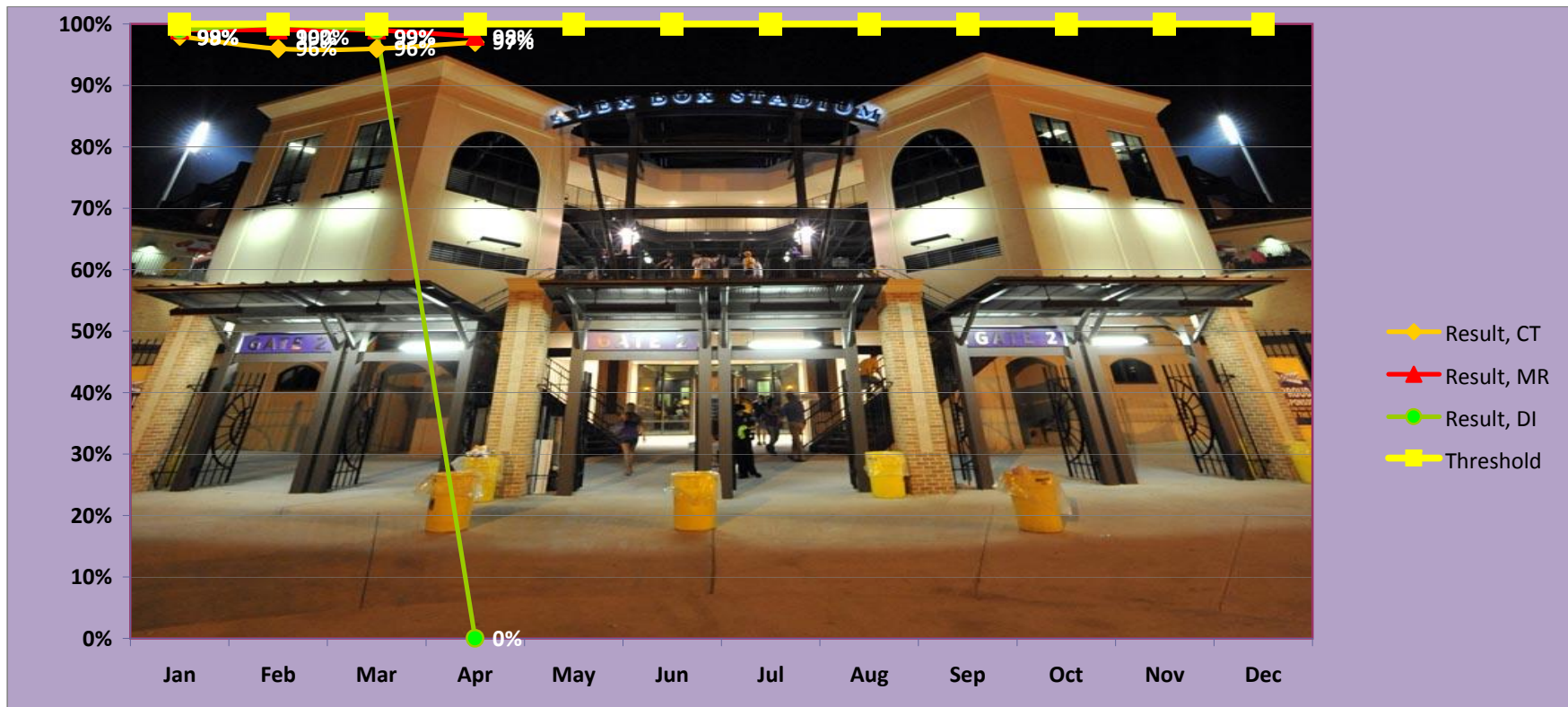


Radiology Department - Performance Improvement 2010

CT, Diagnostic Radiology and MRI: Tracking for the technologists from beginning exam to verifying images to PACS for the radiologist to retrieve images to report.

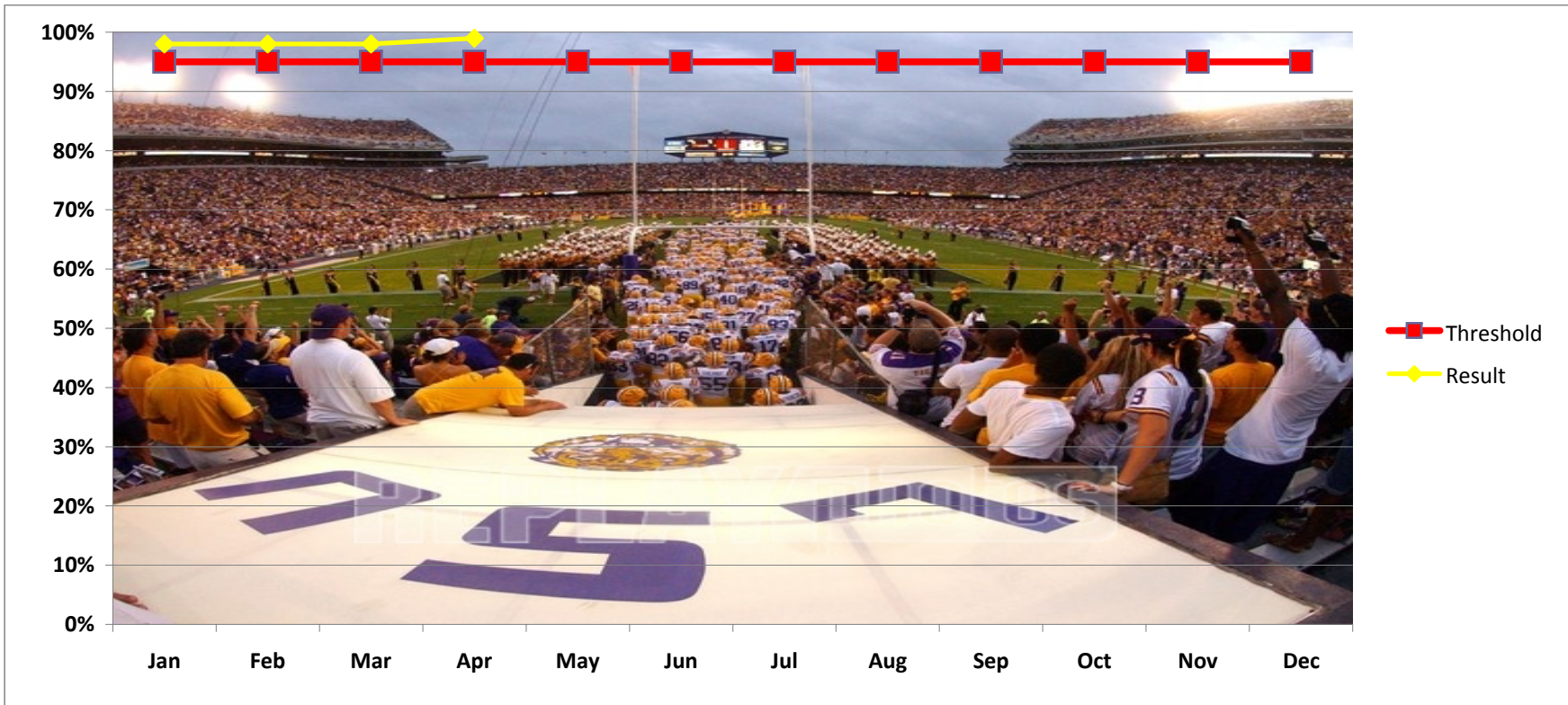
	Jan	Feb	Mar	Apr	May	Jun	Jul	Aug	Sep	Oct	Nov	Dec
Result, CT	98%	96%	96%	97%								
Result, MR	99%	99%	99%	98%								
Result, DI	99%	100%	99%	n/a								
Threshold	100%	100%	100%	100%	100%	100%	100%	100%	100%	100%	100%	100%



Radiology Department - Performance Improvement 2010

Ultrasound: Clinical history for scheduled out patient services needs to be appropriate for the exam requested. Delays occur when no information is provided or is not relevant to the exam requested..

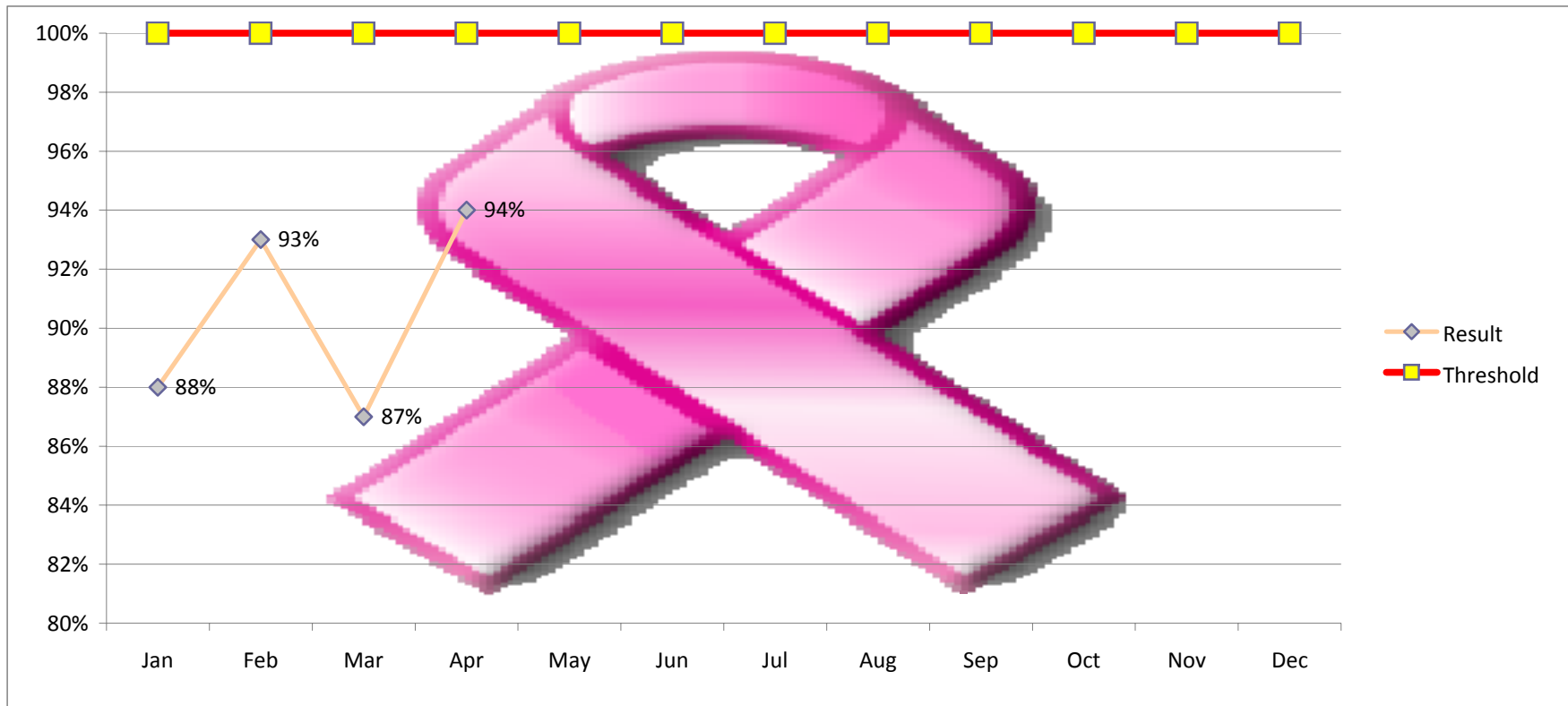
	Jan	Feb	Mar	Apr	May	Jun	Jul	Aug	Sep	Oct	Nov	Dec
Result	98%	98%	98%	99%								
Threshold	95%	95%	95%	95%	95%	95%	95%	95%	95%	95%	95%	95%



Radiology Department - Performance Improvement 2010

Breast Imaging: BIRADS 4 and 5 notification within 5 days with notification to physician dictated in the report (Mammography Quality Standards Act)

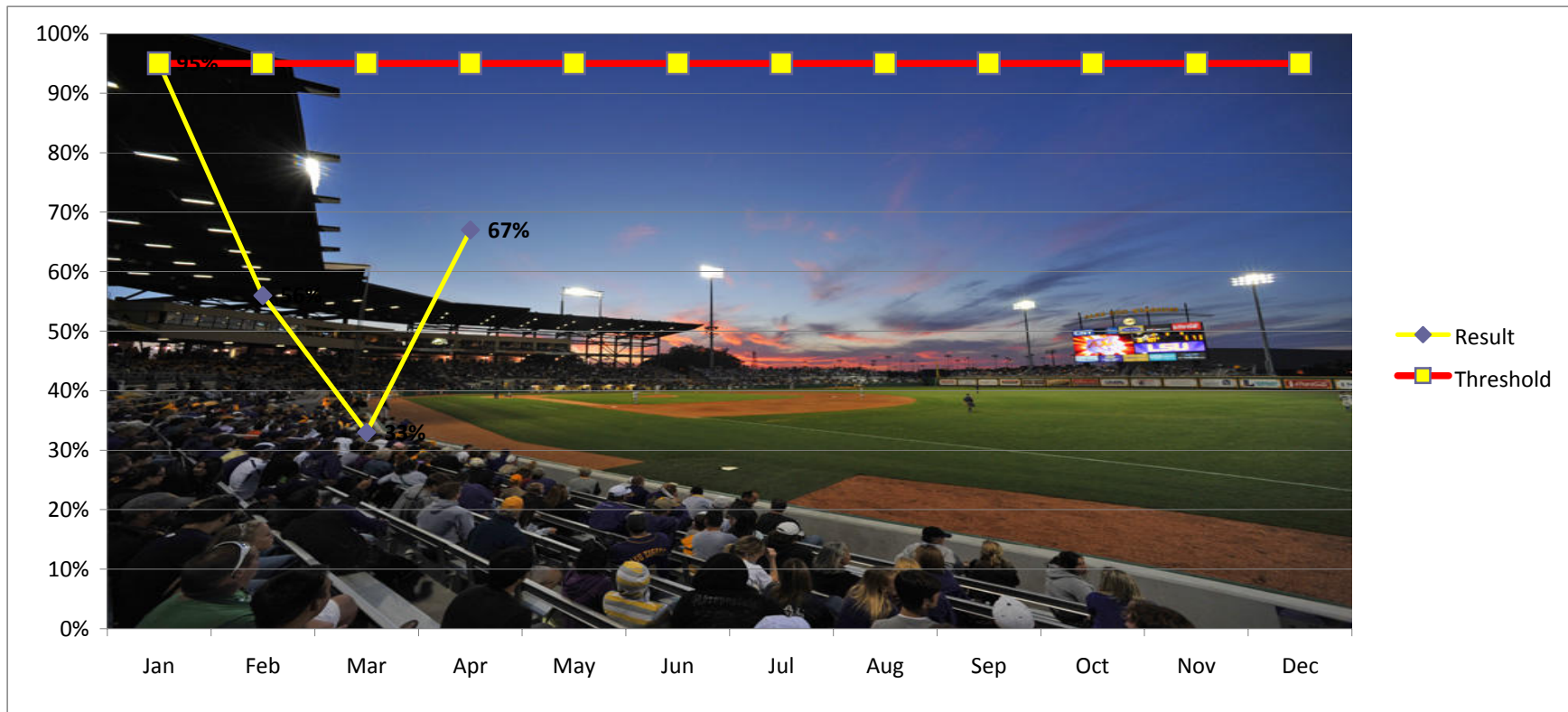
	Jan	Feb	Mar	Apr	May	Jun	Jul	Aug	Sep	Oct	Nov	Dec
Result	88%	93%	87%	94%								
Threshold	100%	100%	100%	100%	100%	100%	100%	100%	100%	100%	100%	100%



Radiology Department - Performance Improvement 2010

Radiation Oncology: ACR guidelines state that the consult notes, progress notes, letters, follow-up and treatment summaries should be in the chart

	Jan	Feb	Mar	Apr	May	Jun	Jul	Aug	Sep	Oct	Nov	Dec
Result	95%	56%	33%	67%								
Threshold	95%	95%	95%	95%	95%	95%	95%	95%	95%	95%	95%	95%



Radiology Department - Performance Improvement 2010

Nuclear Medicine: Wrong exam scheduled and radiopharmaceutical ordered resulting in rescheduling, delay in exam and loss of

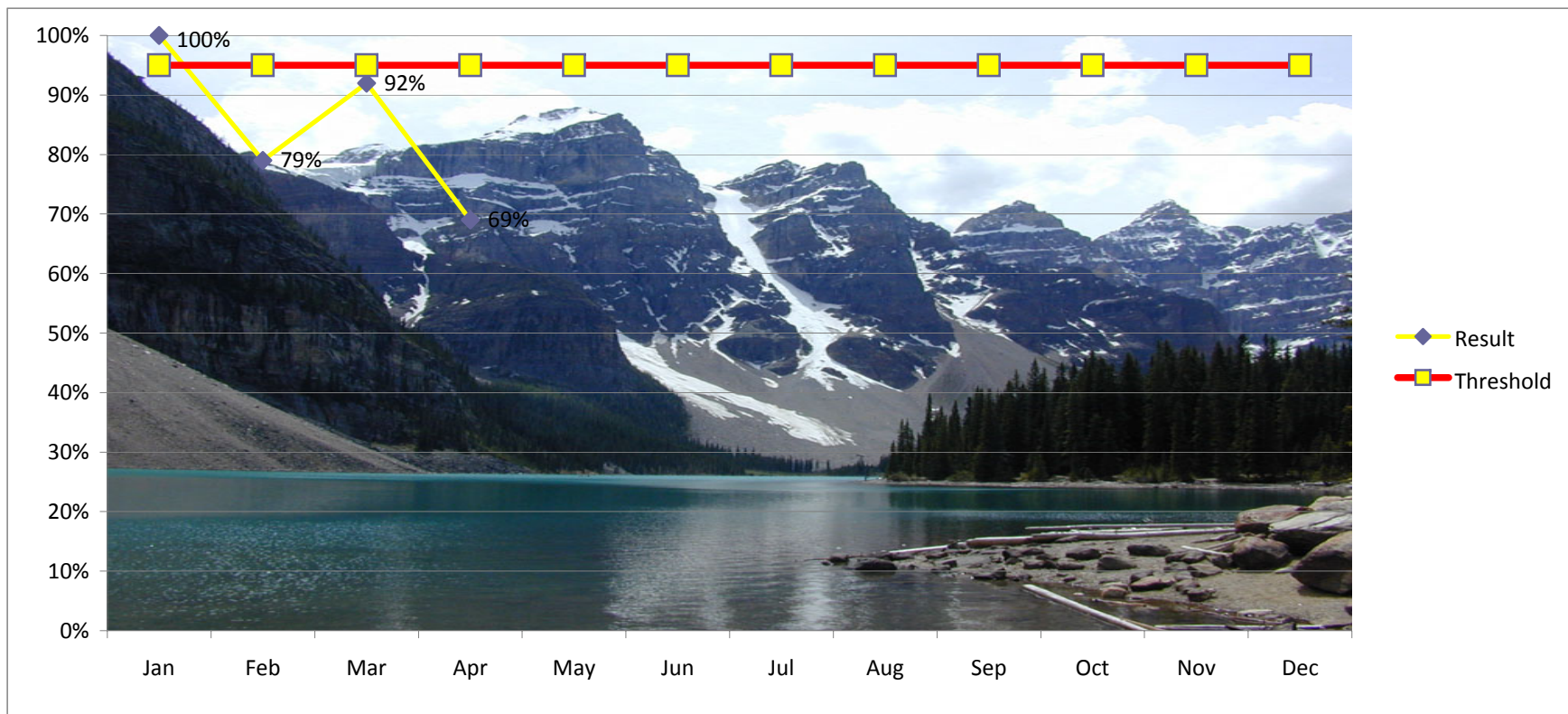
	Jan	Feb	Mar	Apr	May	Jun	Jul	Aug	Sep	Oct	Nov	Dec
Result	83%	79%	85%	83%								
Threshold	100%	100%	100%	100%	100%	100%	100%	100%	100%	100%	100%	100%



Radiology Department - Performance Improvement 2010

Radiation Oncology: PEER Review of patient charts (Requirement of the American College of Radiology)

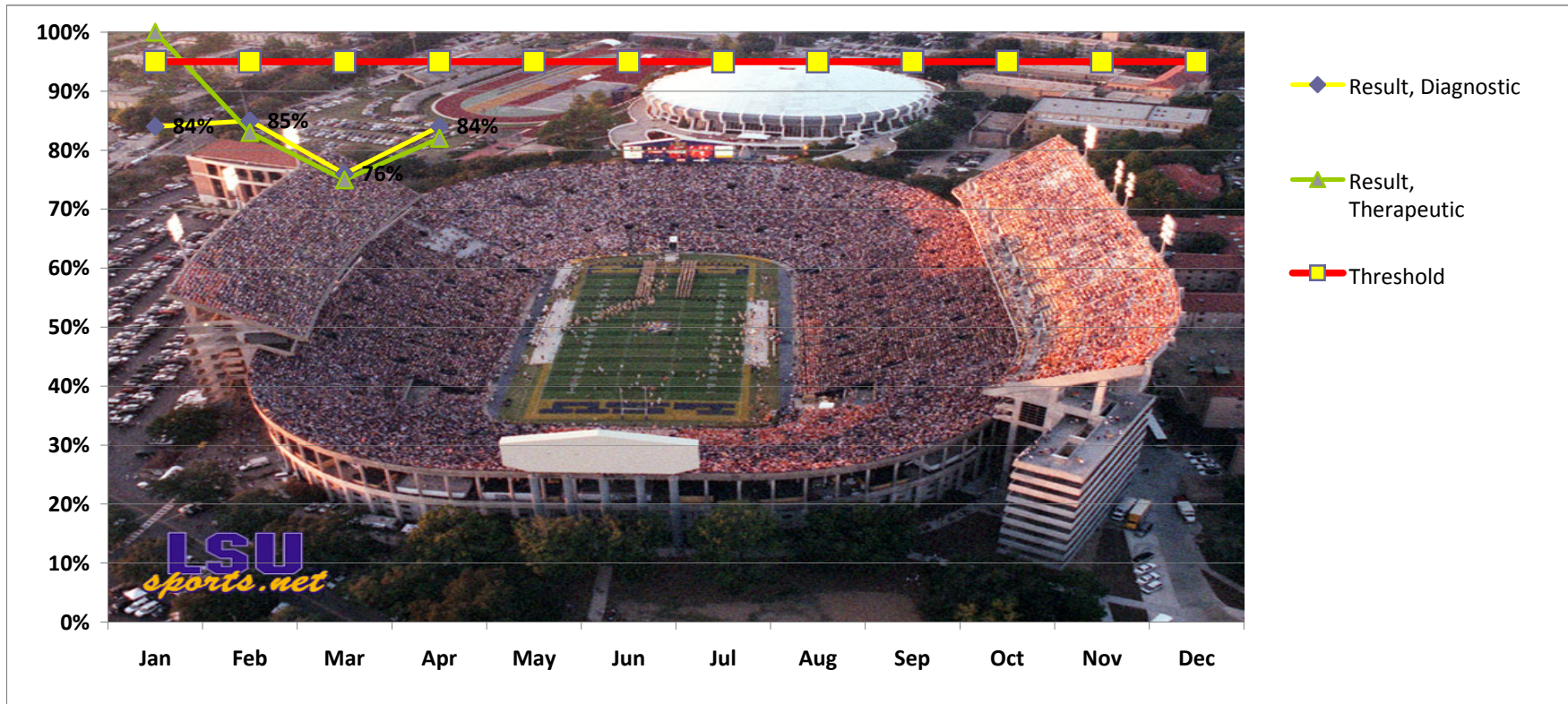
	Jan	Feb	Mar	Apr	May	Jun	Jul	Aug	Sep	Oct	Nov	Dec
Result	100%	79%	92%	69%								
Threshold	95%	95%	95%	95%	95%	95%	95%	95%	95%	95%	95%	95%



Radiology Department - Performance Improvement 2010

Interventional Radiology: Radiation protection is being monitored by following the dose and fluoroscopy time for procedures in this department. It is

	Jan	Feb	Mar	Apr	May	Jun	Jul	Aug	Sep	Oct	Nov	Dec
Result, Diagnostic	84%	85%	76%	84%								
Result, Therapeutic	100%	83%	75%	82%								
Threshold	95%	95%	95%	95%	95%	95%	95%	95%	95%	95%	95%	95%



Radiology Department - Performance Improvement 2010

IR - PICC Lines inserted within 72 hours from order time unless documented reason for delay..

	Jan	Feb	Mar	Apr	May	Jun	Jul	Aug	Sep	Oct	Nov	Dec
Result	100%	75%	86%	78%								
Threshold	95%	95%	95%	95%	95%	95%	95%	95%	95%	95%	95%	95%



Radiology Department - Performance Improvement 2010

Diagnostic - Compliance with procedure for shielding of female patient.

	Jan	Feb	Mar	Apr	May	Jun	Jul	Aug	Sep	Oct	Nov	Dec
Result				88%								
Threshold				100%	100%	100%	100%	100%	100%	100%	100%	100%

